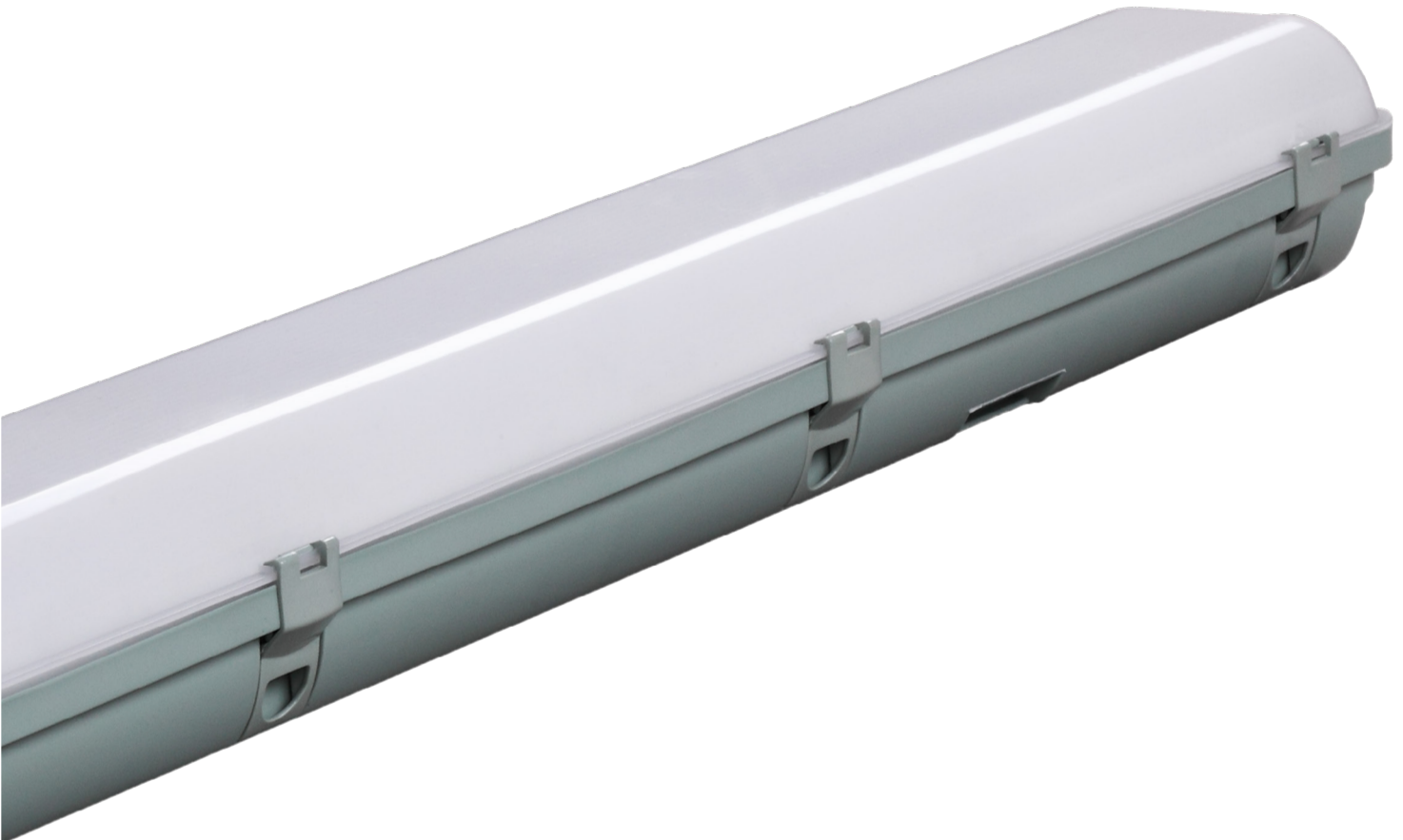


UMBRA IP65



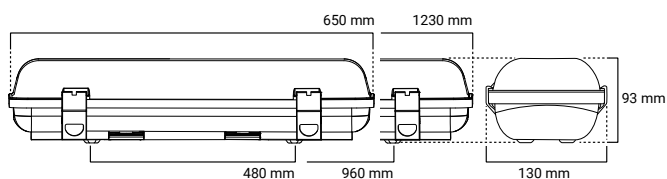
ADVANCED



FEATURES

- Selectable output power
- Fully compliant (**AS/NZS 2293**)
- Emergency and non-emergency models available
- Works as Single Point Units (**SPU**) out of the box
- High Quality Lithium batteries (**LiFePO₄**) and smart charger





PRODUCT RANGE

ORDER CODE	PRODUCT NUMBER	SKU	QTY
EV-UMBRA-ADV-IP65-600-EM-TRI Advanced 600mm LED Tri-CCT Emergency Weatherproof Batten	9336462120354	12035	4
EV-UMBRA-ADV-IP65-600-S-TRI Advanced 600mm LED Tri-CCT Weatherproof Batten with Sensor	9336462120309	12030	4
EV-UMBRA-ADV-IP65-600-EM-S-TRI Advanced 600mm LED Tri-CCT Emergency Weatherproof Batten with Sensor	9336462120316	12031	4
EV-UMBRA-ADV-IP65-1200-EM-TRI Advanced 1200mm LED Tri-CCT Emergency Weatherproof Batten	9336462120378	12037	4
EV-UMBRA-ADV-IP65-1200-S-TRI Advanced 1200mm LED Tri-CCT Weatherproof Batten with Sensor	9336462120323	12032	4
EV-UMBRA-ADV-IP65-1200-EM-S-TRI Advanced 1200mm LED Tri-CCT Emergency Weatherproof Batten with Sensor	9336462120330	12033	4

GENERAL FEATURES

- Tri-colour selection
- Vandal-proof (IK08)
- Weatherproof (IP65)
- Selectable output power
- Emergency and non-emergency models

EMERGENCY MODELS (-EM)

- Fully compliant (AS/NZS 2293.3)
- High Quality Lithium battery (LiFePO₄) and smart charger

SENSOR MODELS (-S)

- Microwave sensor
- Corridor function

BUILT TO LAST

- Long life electronics
- LED Lifetime 54,000 hours (L70/B10)
- 7 Years Design Life – 60,000 hours at max. ambient

SUITABLE INSTALLATION TYPES (OUT OF THE BOX)

- Standalone (SPU)

ACCESSORY RANGE

ORDER CODE	DESCRIPTION	SKU
EV-1500MAH-6.4V-LIFEPO4	1500mAh 6.4V 2 Cell LiFePO ₄ Battery	01302

OPERATIONAL INFORMATION

GENERAL

Voltage	240V~ 50Hz
Ambient temp.	0 to 40°C
Class	1
Wiring	Terminal block (1-16 mm \square)

Mounting type	Surface
---------------	---------

IP rating	IP65	IK rating	IK08
-----------	------	-----------	------

CRI	80	SDCM	< 6
-----	----	------	-----

LAMP POWER	-600	-1200
------------	------	-------

Selectable	15 / 20 W	20 / 35 W
------------	-----------	-----------

COLOUR TEMP.	-600 (20W)	-1200 (35W)
--------------	------------	-------------

4000K	2100lm	4100lm
-------	--------	--------

5000K	2100lm	4100lm
-------	--------	--------

6500K	2100lm	4100lm
-------	--------	--------

EMERGENCY	-600	-1200
-----------	------	-------

Classification	C0:D40, C90:D32	C0:D63, C90:D40
----------------	-----------------	-----------------

Rated duration	90 / 120 min	90 / 120 min
----------------	--------------	--------------

BATTERY	CHARGE		
---------	--------	--	--

Type	LiFePO ₄	Type	Smart charge
------	---------------------	------	--------------

Voltage	6.4 V	Time	16 Hours
---------	-------	------	----------

Codes	01302	Operation	Multi-state
-------	-------	-----------	-------------

CONSTRUCTION			
--------------	--	--	--

Body	PC	Diffuser	PC
------	----	----------	----

Gear tray	Powder coated steel		
-----------	---------------------	--	--

COMPLIANCE			
------------	--	--	--

Standards	AS 60598.2.22 AS/NZS 2293.3	IEC 60598-2-22 CISPR 15
-----------	--------------------------------	----------------------------

NOTE: For more information on the chemical resistance of our polycarbonate or our compliance documentation, please see our website.